

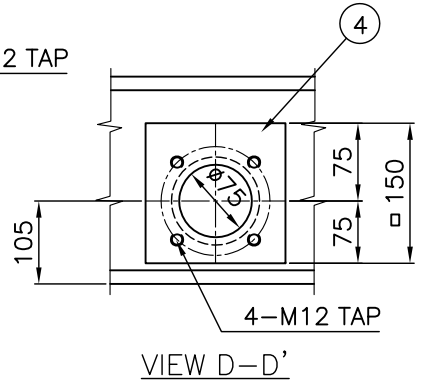
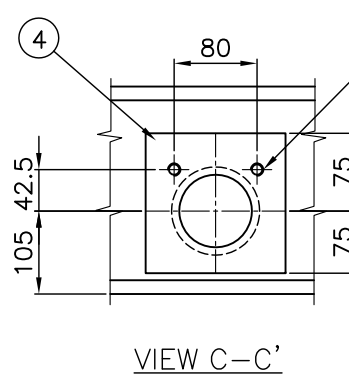
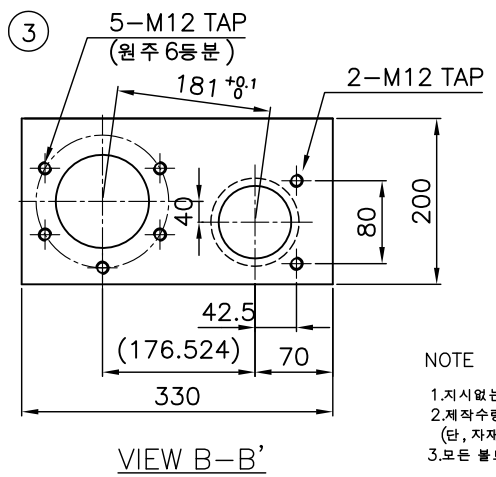
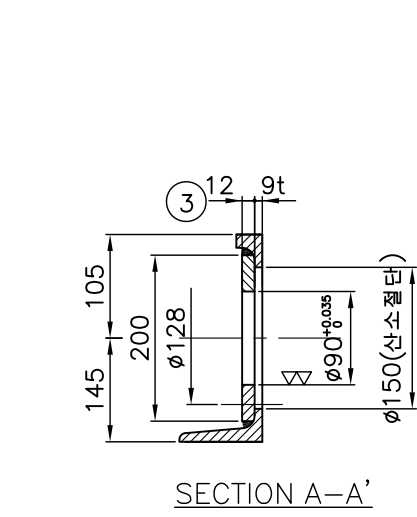
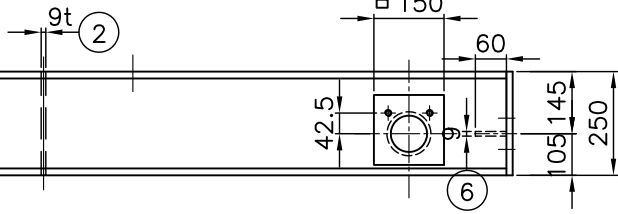
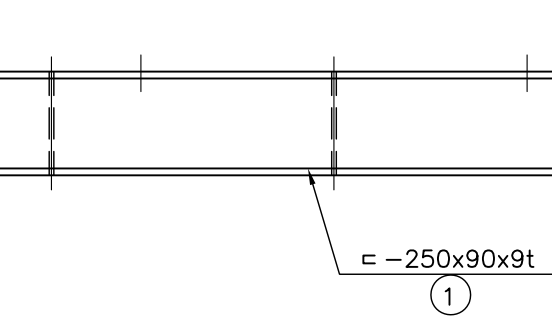
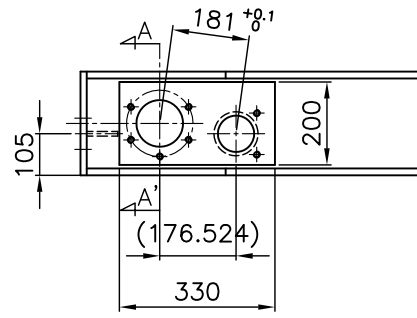
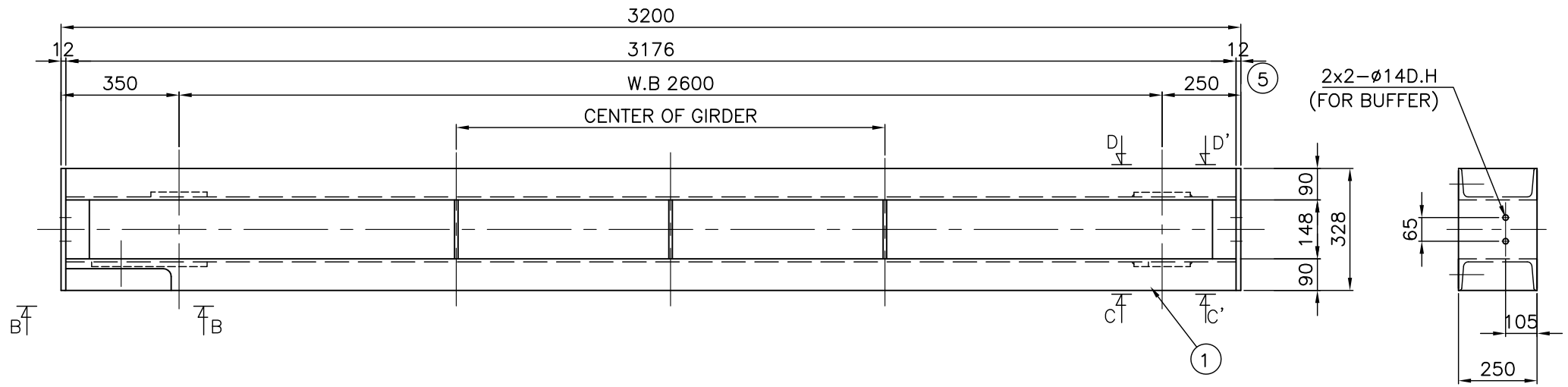
NOTE
 1. 지시없는 용접부는 얇은 모재두께의 70%로 연속 필릿 용접 할 것
 2. 제작수량 크레인 1대분 2SETS중 1SET는 본도와 대칭으로 제작 할 것 (단, 자재란 수량은 크레인 1대분임.)
 3. 모든 볼트구멍은 상대품과 동시 가공 할 것

NO.	DESCRIPTION	MT'L	QT'Y	WEIGHT KG	REMARK
6	PL 9t x 60 x 148	SS400	4		
5	PL 12t - 328 x 250	SS400	4		
4	PL 12t - 150 x 150	SS400	6		
3	PL 12t - 200 x 330	SS400	2		
2	PL 9t x 250 x 148	SS400	6		
1	c - 250 x 90 x 9 / 11t	SS400	4		L-3076

NO.	DATE	REVISION	NO.	DATE	REVISION	NOTE
1			1			
2			2			
3			3			

제작사

DRAWN BY	분상복	DATE	2017. 1.
DESIGNED BY	김태훈	SCALE	N/S
CHECKED BY	김찬영	PROJECT	SADDLE ASS'Y
APPROVED BY			



NOTE
 1. 지시없는 용접부는 얇은 모재두께의 70%로 연속 필릿 용접 할 것
 2. 제작수량 크레인 1대분 2SETS중 1SET는 본도와 대칭으로 제작 할 것 (단, 자재란 수량은 크레인 1대분임.)
 3. 모든 볼트구멍은 상대품과 동시 가공 할 것

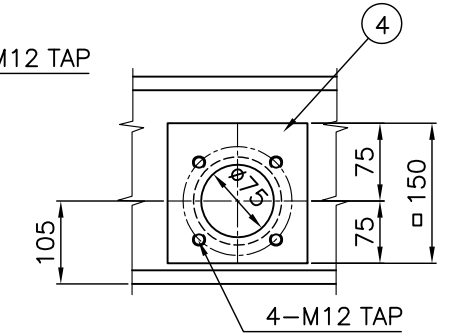
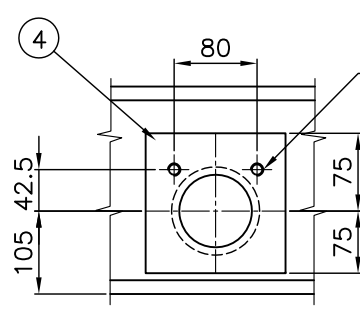
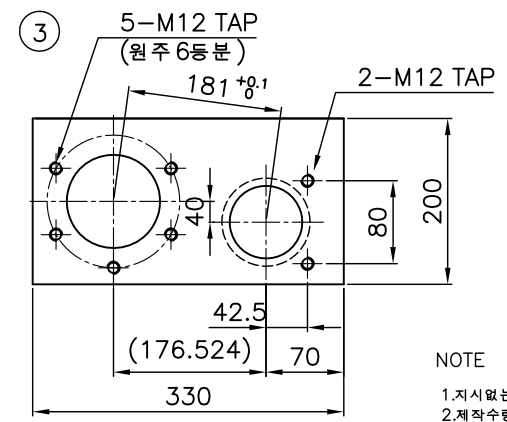
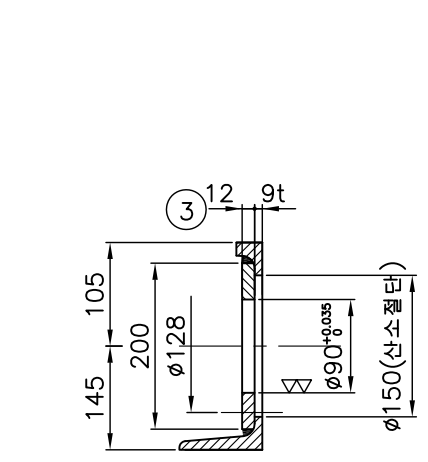
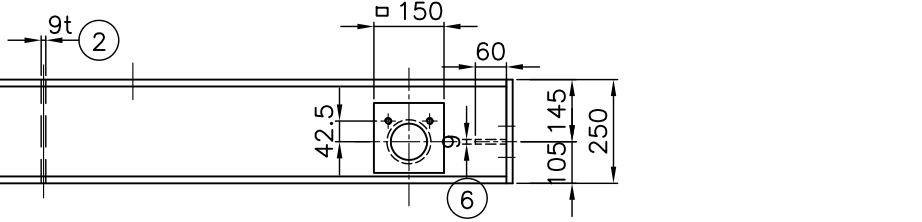
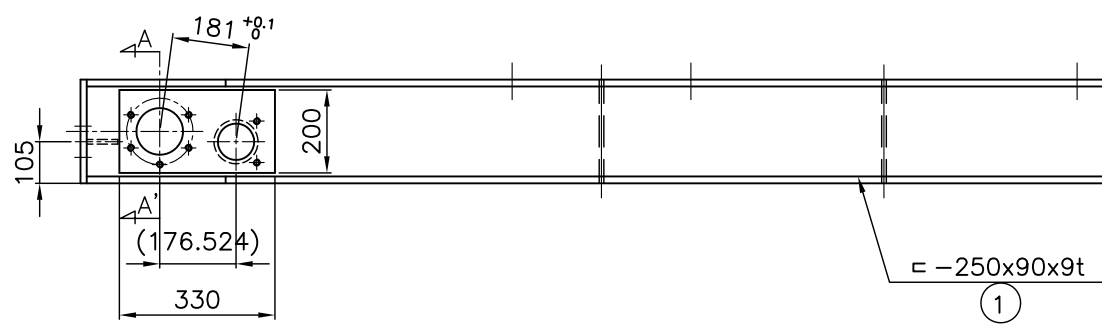
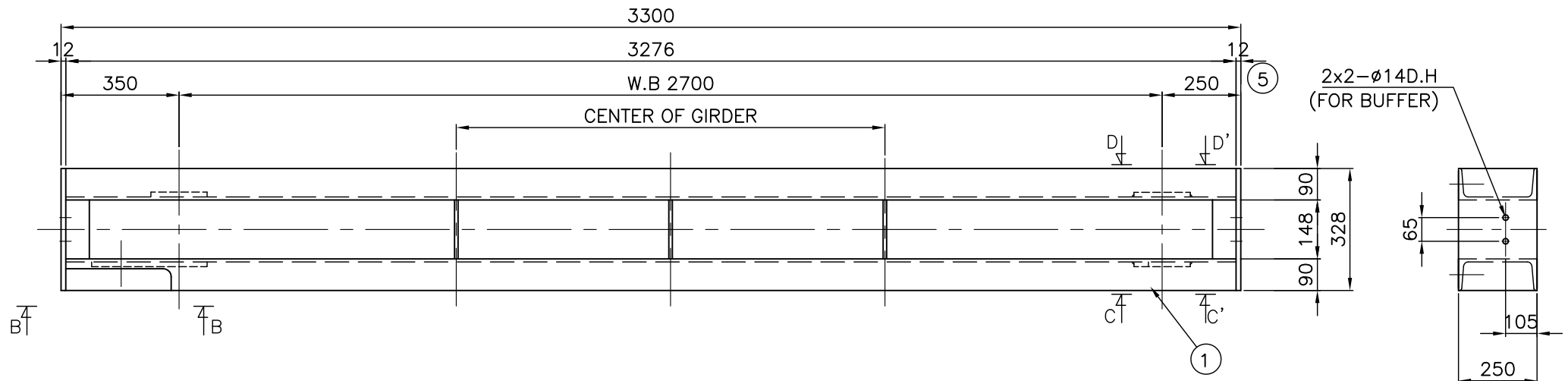
NO.	DESCRIPTION	MT'L	QT'Y	WEIGHT KG	REMARK
6	PL 9t x 60 x 148	SS400	4		
5	PL 12t - 328 x 250	SS400	4		
4	PL 12t - 150 x 150	SS400	6		
3	PL 12t - 200 x 330	SS400	2		
2	PL 9t x 250 x 148	SS400	6		
1	c - 250 x 90 x 9 / 11t	SS400	4		L-3176

NO.	DATE	REVISION	NO.	DATE	REVISION	NOTE
1			1			
2			2			
3			3			

제작사
JIN DO MACHINERY CO.

DRAWN BY: 문성복 / 2017. 1. 10
 DESIGNED BY: 김태훈 / 2017. 1. 10
 CHECKED BY: 김환영 / 2017. 1. 10
 APPROVED BY: 김환영 / 2017. 1. 10
 SUBJECT: ø 250
 PROJECT: SADDLE ASS'Y

SCALE: N/S
 DATE: 2017. 1.
 PROJECT NO.: JD-250
 DRAWING NO.: 01B



NOTE
 1. 지시없는 용접부는 얇은 모재두께의 70%로 연속 필릿 용접 할 것
 2. 제작수량 크레인 1대분 2SETS중 1SET는 본도와 대칭으로 제작 할 것 (단, 자재란 수량은 크레인 1대분임.)
 3. 모든 볼트구멍은 상대품과 동시 가공 할 것

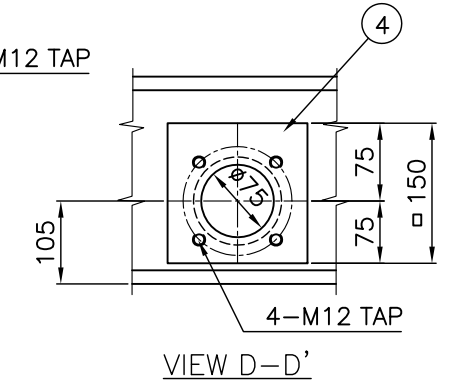
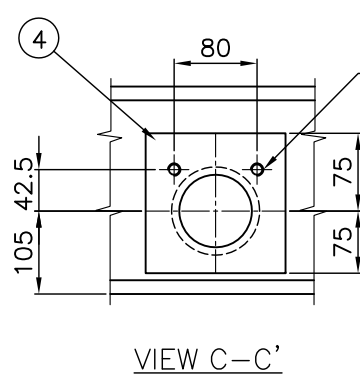
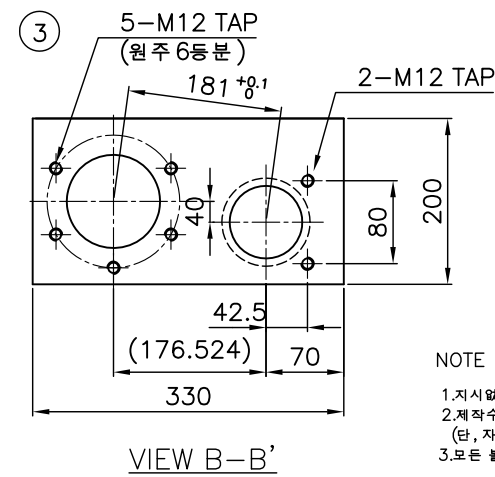
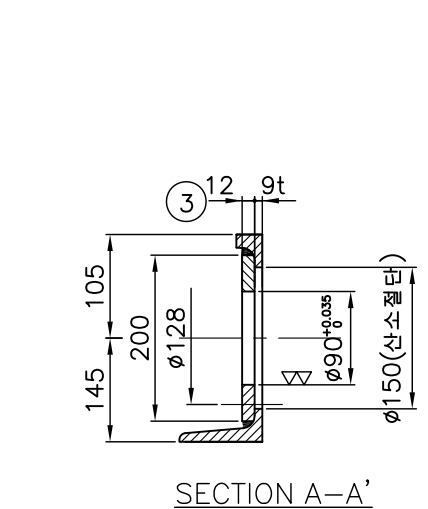
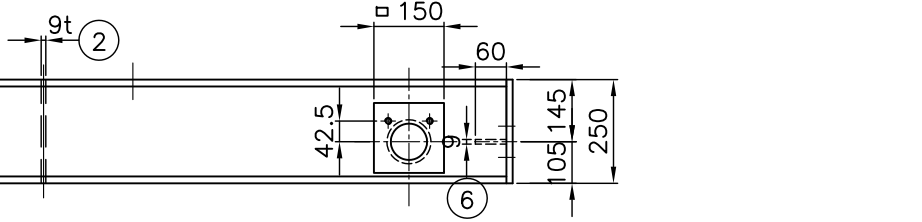
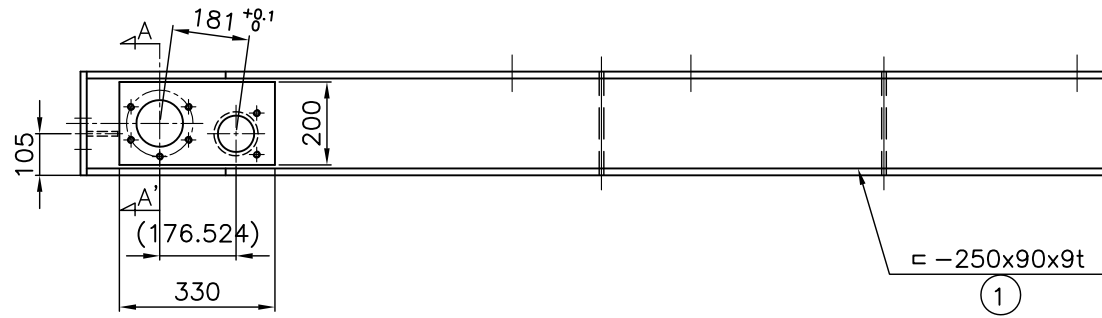
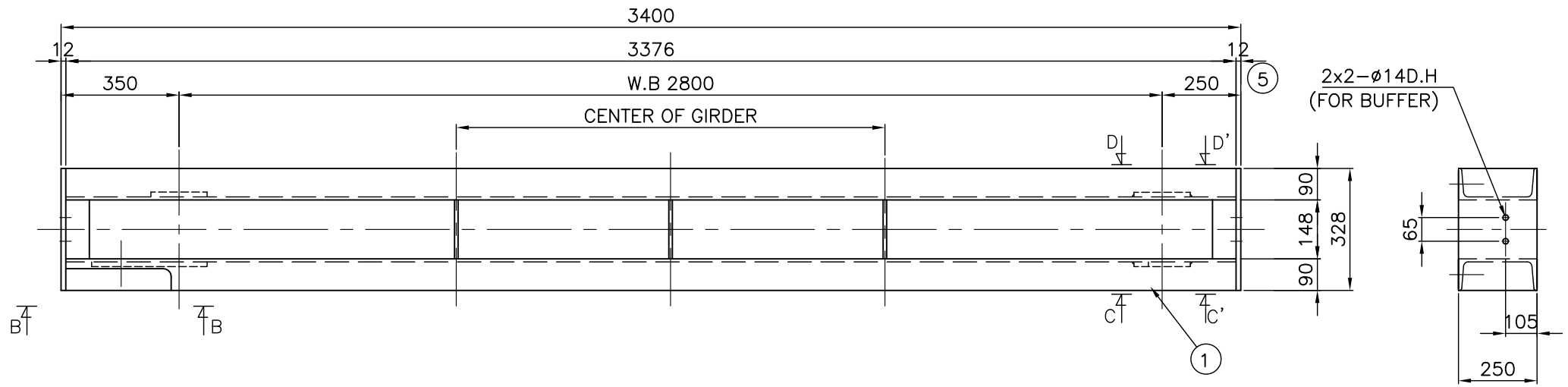
NO.	DESCRIPTION	MT'L	QT'Y	WEIGHT KG	REMARK
6	PL 9t x 60 x 148	SS400	4		
5	PL 12t - 328 x 250	SS400	4		
4	PL 12t - 150 x 150	SS400	6		
3	PL 12t - 200 x 330	SS400	2		
2	PL 9t x 250 x 148	SS400	6		
1	c - 250 x 90 x 9 / 11t	SS400	4		L-3276

NO.	DATE	REVISION	NO.	DATE	REVISION	NOTE
1			1			
2			2			
3			3			

제작사
JIN DO MACHINERY CO.

DRAWN BY	분상복	DATE	2017. 1.
DESIGNED BY	김태훈	SCALE	N/S
CHECKED BY	김찬영	PROJECT	SADDLE ASS'Y
APPROVED BY			

PROJECT NO.	JD-250
DRAWING NO.	0/C



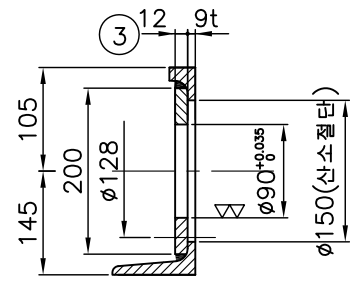
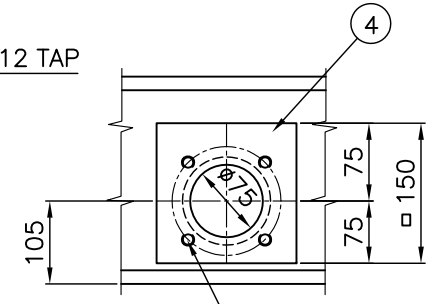
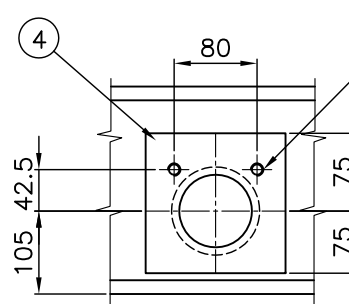
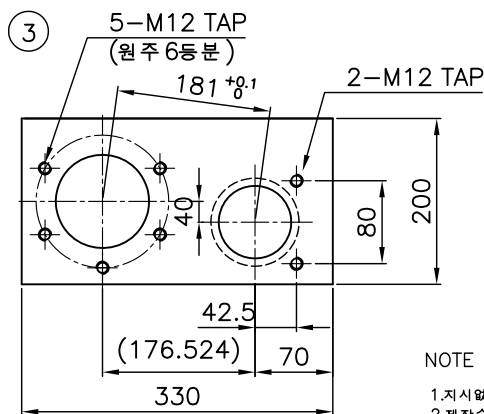
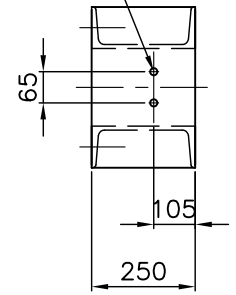
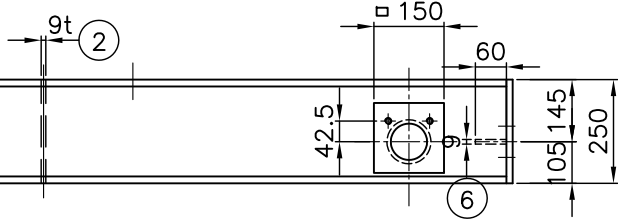
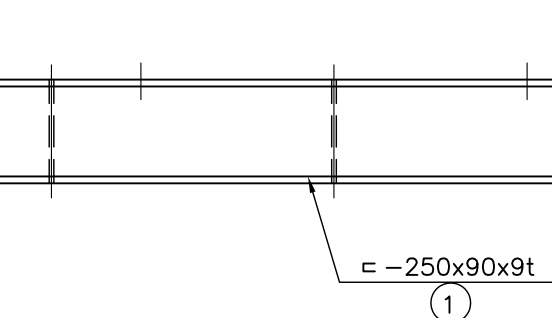
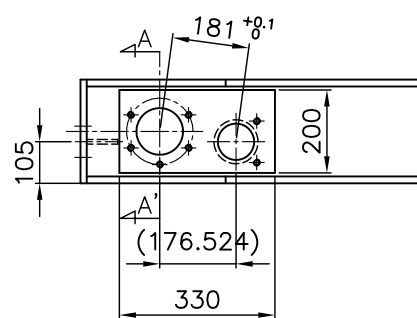
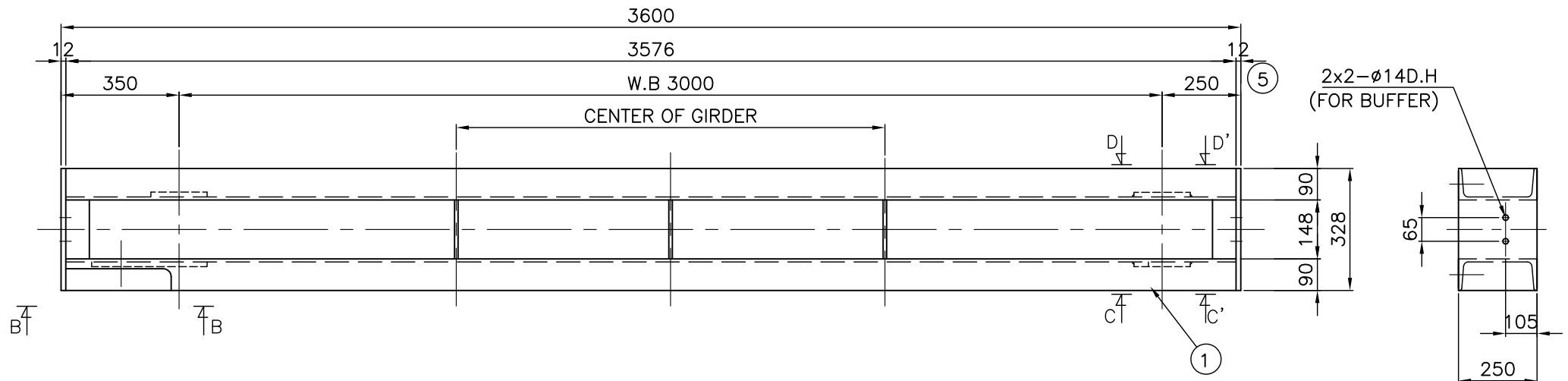
NOTE
 1. 지시없는 용접부는 얇은 모재두께의 70%로 연속 필릿 용접 할 것
 2. 제작수량 크레인 1대분 2SETS중 1SET는 본도와 대칭으로 제작 할 것 (단, 자재란 수량은 크레인 1대분임.)
 3. 모든 볼트구멍은 상대품과 동시 가공 할 것

NO.	DESCRIPTION	MT'L	QT'Y	WEIGHT KG	REMARK
6	PL 9t x 60 x 148	SS400	4		
5	PL 12t - 328 x 250	SS400	4		
4	PL 12t - 150 x 150	SS400	6		
3	PL 12t - 200 x 330	SS400	2		
2	PL 9t x 250 x 148	SS400	6		
1	c - 250 x 90 x 9 / 11t	SS400	4		L-3376

NO.	DATE	REVISION	NO.	DATE	REVISION	NOTE
1			1			
2			2			
3			3			

제작사
JIN DO MACHINERY CO.

DRAWN BY: 문상복 / KJH
 DESIGNED BY: 김태훈 / KJH
 CHECKED BY: 김환영 / KJH
 APPROVED BY: [Signature]
 SUBJECT: Ø 250
 PROJECT: SADDLE ASS'Y
 SCALE: N/S
 DATE: 2017. 1.
 PROJECT NO.: JD-250
 DRAWING NO.: 01D



NOTE
 1. 지시없는 용접부는 얇은 모재두께의 70%로 연속 필릿 용접 할 것
 2. 제작수량 크레인 1대분 2SETS중 1SET는 본도와 대칭으로 제작 할 것 (단, 자재란 수량은 크레인 1대분임.)
 3. 모든 볼트구멍은 상대품과 동시 가공 할 것

NO.	DESCRIPTION	MT'L	QT'Y	WEIGHT KG	REMARK
6	PL 9t x 60 x 148	SS400	4		
5	PL 12t - 328 x 250	SS400	4		
4	PL 12t - 150 x 150	SS400	6		
3	PL 12t - 200 x 330	SS400	2		
2	PL 9t x 250 x 148	SS400	6		
1	c - 250 x 90 x 9 / 11t	SS400	4		L-3576

NO.	DATE	REVISION	NO.	DATE	REVISION	NOTE
1			1			
2			2			
3			3			

제작사
JIN DO MACHINERY CO.

DRAWN BY: 문성복 / KSH
 DESIGNED BY: 김태훈 / KSH
 CHECKED BY: 김찬영 / KSH
 APPROVED BY: [Signature]
 SUBJECT: ø 250
 PROJECT: SADDLE ASS'Y
 SCALE: N/S
 DATE: 2017. 1.
 PROJECT NO.: JD-250
 DRAWING NO.: 01E