

TOTAL WEIGHT : 2680 KG

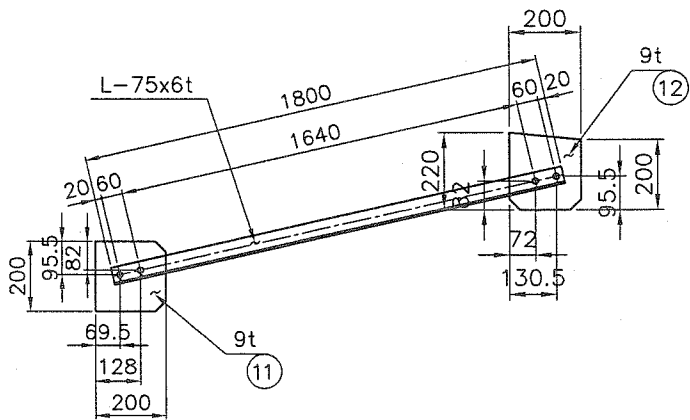
NO.	DESCRIPTION	MT'L	QT'Y	WEIGHT KG	REMARK
12	H.T B/N 2-P/W	F10T	16		M16x65L
11	9tx200x200	SS400	4	11	
10	9tx200x200	SS400	4	11	
9	L-75x6t-1800L	SS400	4	49	
8	F.B 50x6tx6000	SS400	4.8	77	
7	6tx610x16248	SS400	1	467	
6	6tx1219x16156	SS400	1	928	
5	I-300x150x10/18.5t	SS400	1	1058	16156L
4	12tx500x670	SS400	2	63	
3	6tx338x500	SS400	2	16	
2	H.T B/N 8T/W 2-P/W	F10T	36		M16x65L
1	H.T B/N 5T/W 2-P/W	F10T	12		M16x65L

NO.	DATE	REVISION	NO.	DATE	REVISION	NOTE
1			1			
2			2			
3			3			

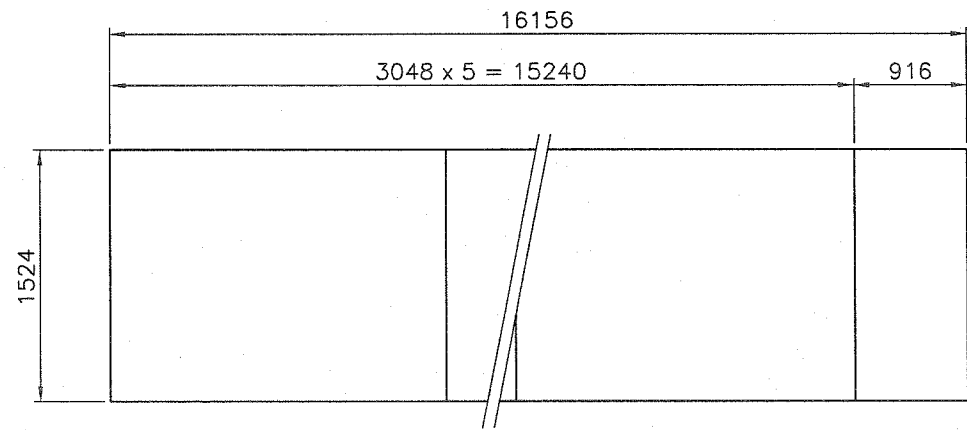
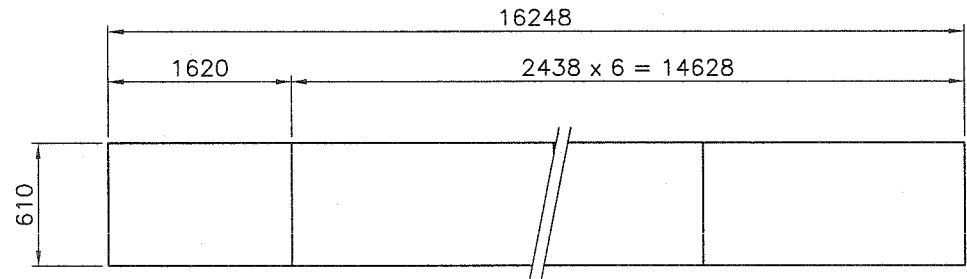
제조사 **JIN DO** MACHINERY CO.

DRAWN BY	윤성학	DATE		SUBJECT	DETAIL OF SINGLE GIRDER	SCALE	N/S	DATE	2017. 12.
DESIGNED BY	김백준	PROJECT			5 TON x SPAN 16 M 000				
CHECKED BY	정관희								
APPROVED BY									

PROJECT NO. JD-5-16 DRAWING NO. 01A



⑩ DETAIL



CUTTING PLAN

NO.	DATE	REVISION	NO.	DATE	REVISION	NOTE
1			1			
2			2			
3			3			

제작사



DROWN BY
DESIGNED BY
CHECKED BY
APPROVED BY

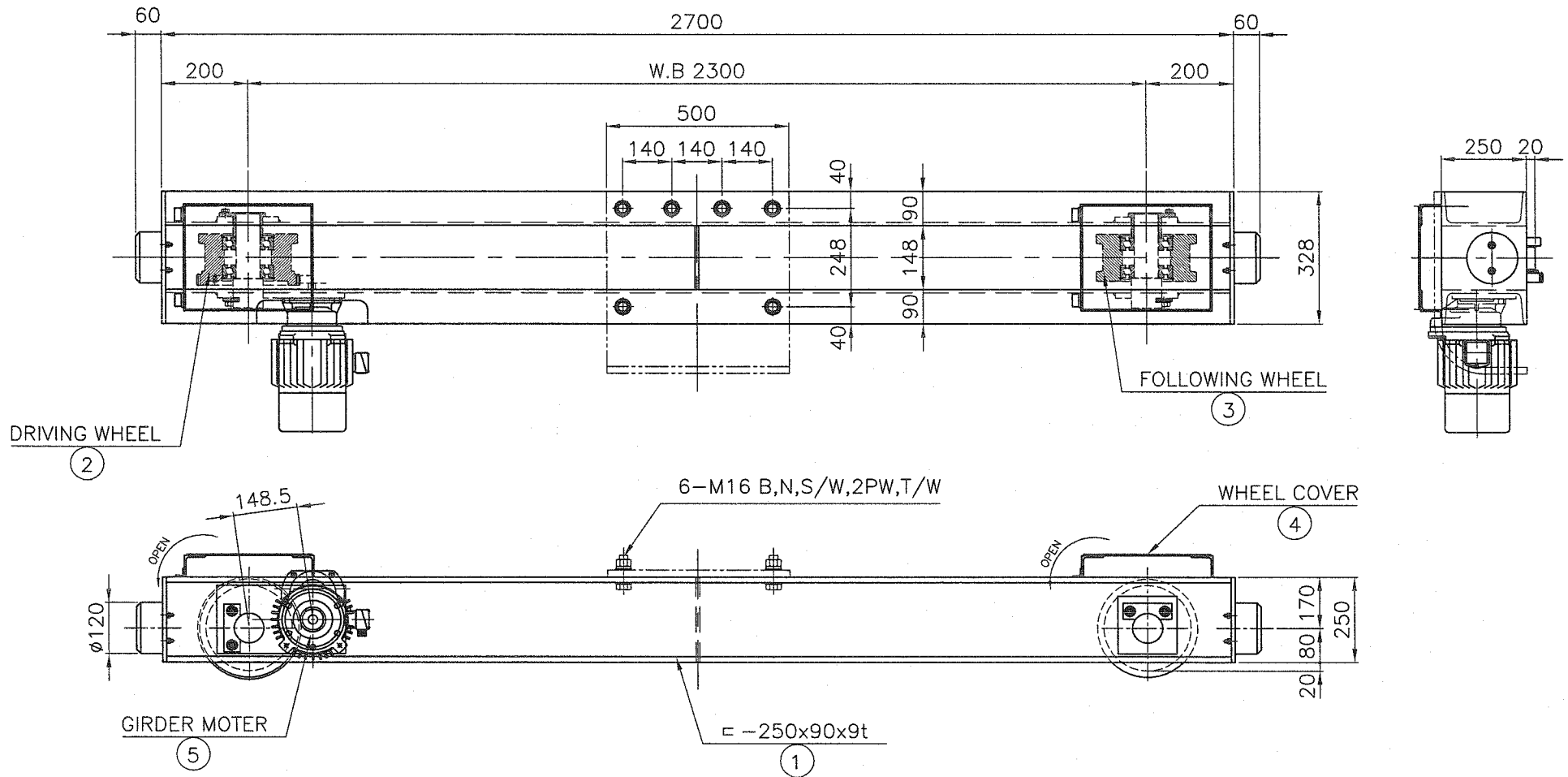
윤성복
김태훈
김한영

12
Ksh
Zsh

SUBJECT
PROJECT

CUTTING PLAN
5 TON x SPAN 16 M 000

SCALE	DATE
N/S	2017. 12.
PROJECT NO.	DRAWING NO.
JD-5-16	01B



$$V = 1650 \times 3.14 \times 0.2 \times 16 / 58 \times 1 / 16.3 = 18 \text{ m/min}$$

(M = 4)

NOTE

1. 지시없는 용접부는 양음모재 두께의 70%로 연속용접할것.
2. 절단면은 그라인딩 할것.
3. 거더와 새들을 체결하는 볼트 홀은 동시에 가공할것.
4. 볼트의 길이는 너트를 체결하고 나사산이 3산 이상이 남을것.
5. 거더와 체결하는 볼트는 HIGH TENSION BOLT로 사용할것.
6. 거더와 체결하는 새들의 대각편차는 10M당 1mm, 최대 3mm이내일것.

SPECIFICATION	
SPEED	18 M/MIN
MOTOR	0.75 KW x 4 P
POWER SOURCE	AC ø 3 380 V 60 Hz
REMARK	

WEIGHT = 350 KG

NO.	DESCRIPTION	MT'L	QTY	WEIGHT KG	REMARK
5	GEARED MOTOR	PUR-	1	30	
4	WHEEL COVER	SS400	2	25	
3	FOLLOWING WHEEL	S45C	1	35	
2	DRIVING WHEEL	S45C	1	40	
1	SADDLE FARME	SS400	1	220	

NO.	DATE	REVISION	NO.	DATE	REVISION	NOTE
1			1			
2			2			
3			3			

제조사



DROWN BY: 홍원석 / rsk
 DESIGNED BY: 김태준 / Esh
 CHECKED BY: 김한영 / Zsh
 APPROVED BY:

ø 200

SADDLE ASS'Y

SCALE: N/S
 DATE: 2017. 12.
 PROJECT NO.:
 DRAWING NO.: JD-5-16 01A