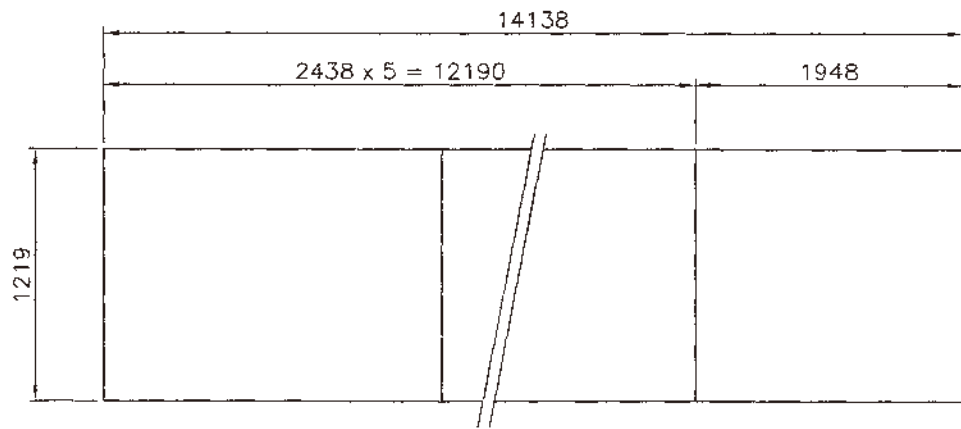
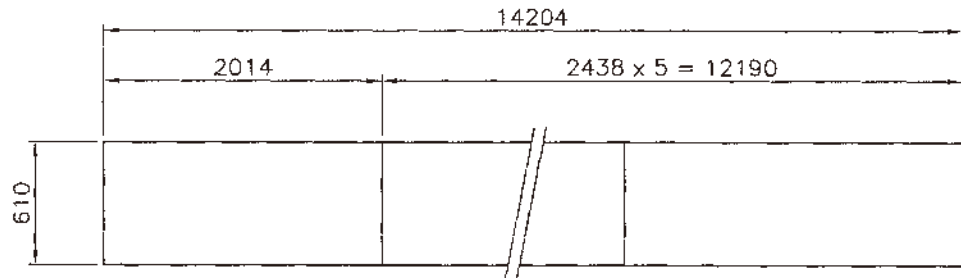


⑩ DETAIL



CUTTING PLAN

NO.	DATE	REVISION	NO.	DATE	REVISION	NOTE
1			1			
2			2			
3			3			

제작사



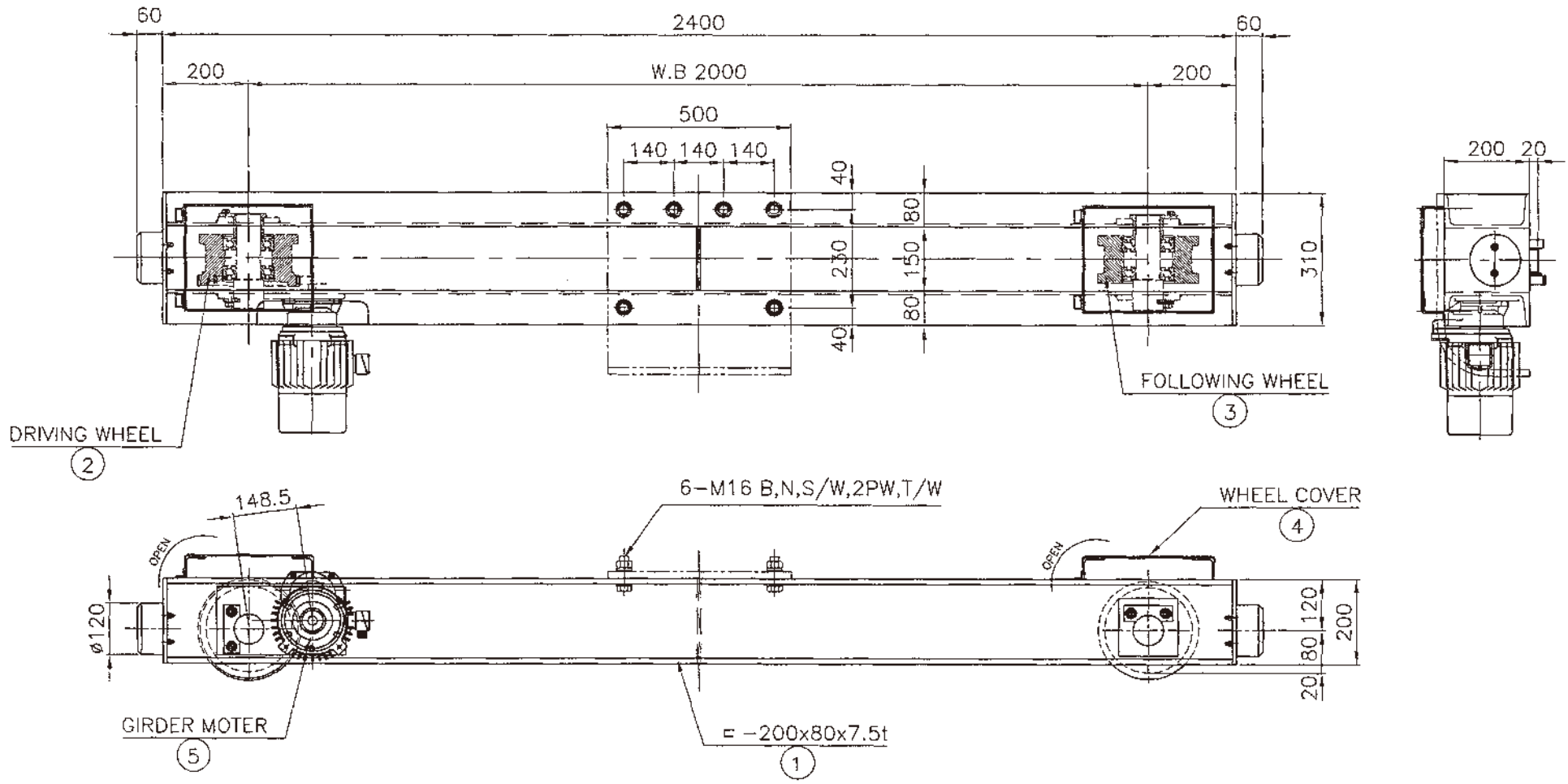
DRAWN BY: 윤성복  
 DESIGNED BY: 김재홍  
 CHECKED BY: 김광현  
 APPROVED BY:

SCALE: N/S  
 DATE: 2017. 12.

SUBJECT: CUTTING PLAN

PROJECT: 5 TON x SPAN 14 M 000

PROJECT NO.: JD-5-14  
 DRAWING NO.: 01B



$$V = 1650 \times 3.14 \times 0.2 \times 16 / 58 \times 1 / 16.3 = 18 \text{ m/min}$$

$$(M = 4)$$

- NOTE**
1. 저시속은 승압부하 압축모재 무게의 70%로 연속운전할것.
  2. 절단압은 그라인딩 할것.
  3. 거더와 새롭음 체결하는 볼트 풀른 동시에 가공할것.
  4. 볼트의 길이는 너트를 체결하고 나사산이 3산 이상이 남을것.
  - 5 거더와 체결하는 볼트는 HIGH TENSION BOLT로 사용할것.
  6. 거더와 체결하는 새들의 대각편차는 10M당 1mm, 최대 3mm이내일것.

SPECIFICATION		
SPEED	18	M/MIN
MOTOR	0.75	KW x 4 P
POWER SOURCE	AC Ø 3 380 V 60 Hz	
REMARK		

WEIGHT = 280 KG

NO.	DESCRIPTION	MT'L	QTY	WEIGHT KG	REMARK
5	GEARED MOTOR	PUR-	1	30	
4	WHEEL COVER	SS400	2	25	
3	FOLLOWING WHEEL	S45C	1	35	
2	DRIVING WHEEL	S45C	1	40	
1	SADDLE FARMER	SS400	1	150	

NO.	DATE	REVISION	NO.	DATE	REVISION	NOTE
1			1			
2			2			
3			3			

제 회사



DRAWN BY: [Signature]  
 DESIGNED BY: [Signature]  
 CHECKED BY: [Signature]  
 APPROVED BY: [Signature]

SUBJECT: Ø 200  
 PROJECT: SADDLE ASS'Y

SCALE: N/S  
 DATE: 2017. 12.  
 PROJECT NO.:  
 DRAWING NO.: JD-5-14 0/A 1