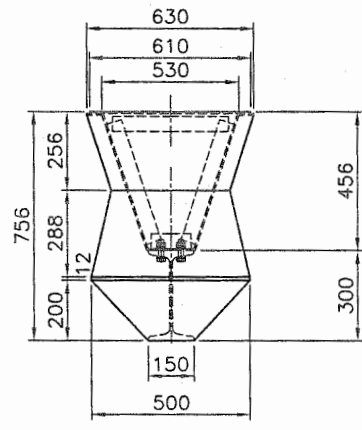
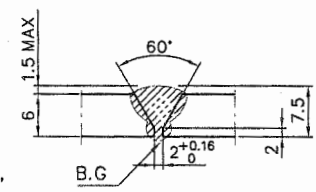
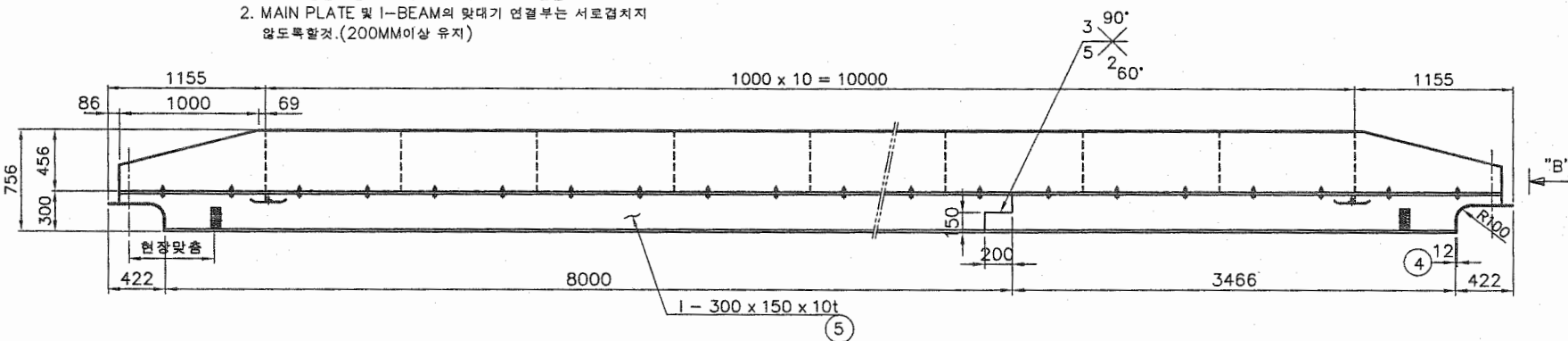
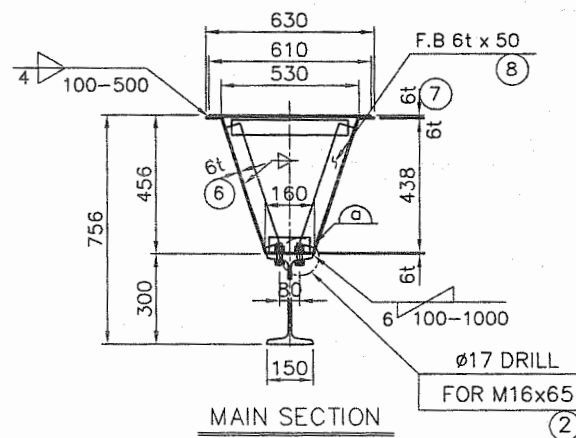


DETAIL a

NOTE
 1. 지시의 용접부는 모재 두께의 70% 연속용접할것.
 2. MAIN PLATE 및 I-BEAM의 맞대기 연결부는 서로겹치지 않도록할것.(200MM이상 유지)



VIEW "B"



MAIN SECTION

TOTAL WEIGHT : 1960 KG

NO.	DESCRIPTION	MT'L	QTY	WEIGHT KG	REMARK
8	F.B 50x6tx6000	SS400	2.9	46	
7	6t x 610 x 12204	SS400	1	351	
6	6t x 1219 x 12138	SS400	1	697	
5	I-300x150x10/18.5t	SS400	1	795	12138L
4	12t x 500 x 610	SS400	2	57	
3	6t x 288 x 500	SS400	2	14	
2	H.T B/N 8" T/W 2-P/W	F10T	28		M16x65L
1	H.T B/N 5" T/W 2-P/W	F10T	12		M16x65L
NO.	DESCRIPTION	MT'L	QTY	WEIGHT KG	REMARK

NO.	DATE	REVISION	NO.	DATE	REVISION	NOTE
1			1			
2			2			
3			3			

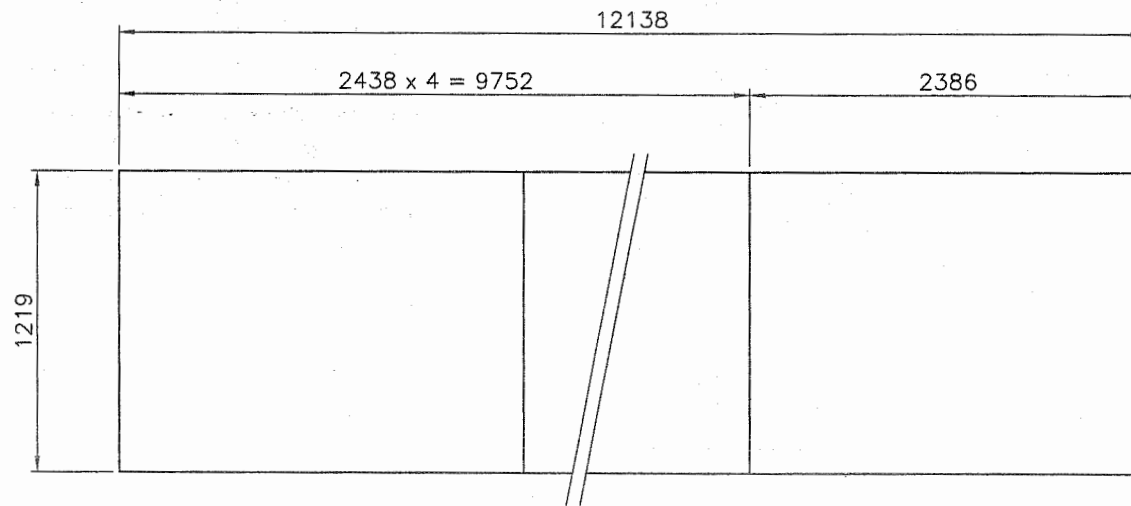
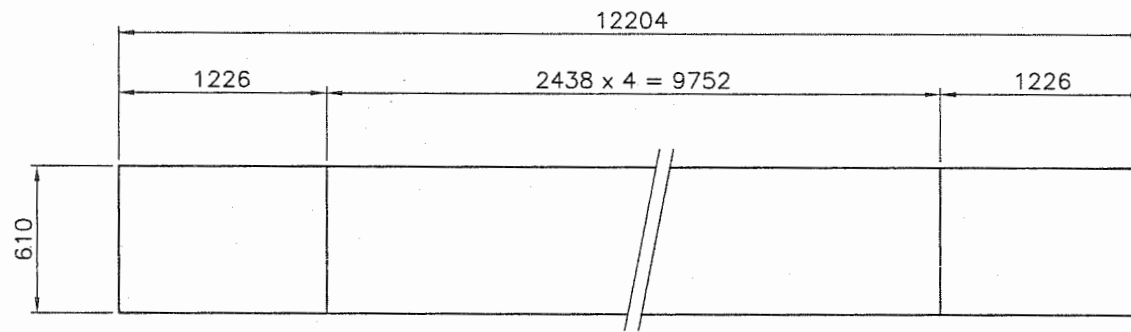
제작사



DRAWN BY: 홍성석
 DESIGNED BY: 김태훈
 CHECKED BY: 김관영
 APPROVED BY: 김관영

SUBJECT: DETAIL OF SINGLE GIRDER
 PROJECT: 5 TON x SPAN 12 M 000

SCALE: N/S
 DATE: 2017. 12.
 PROJECT NO.: JD-5-12
 DRAWING NO.: 01A



CUTTING PLAN

NO.	DATE	REVISION	NO.	DATE	REVISION	NOTE
1			1			
2			2			
3			3			

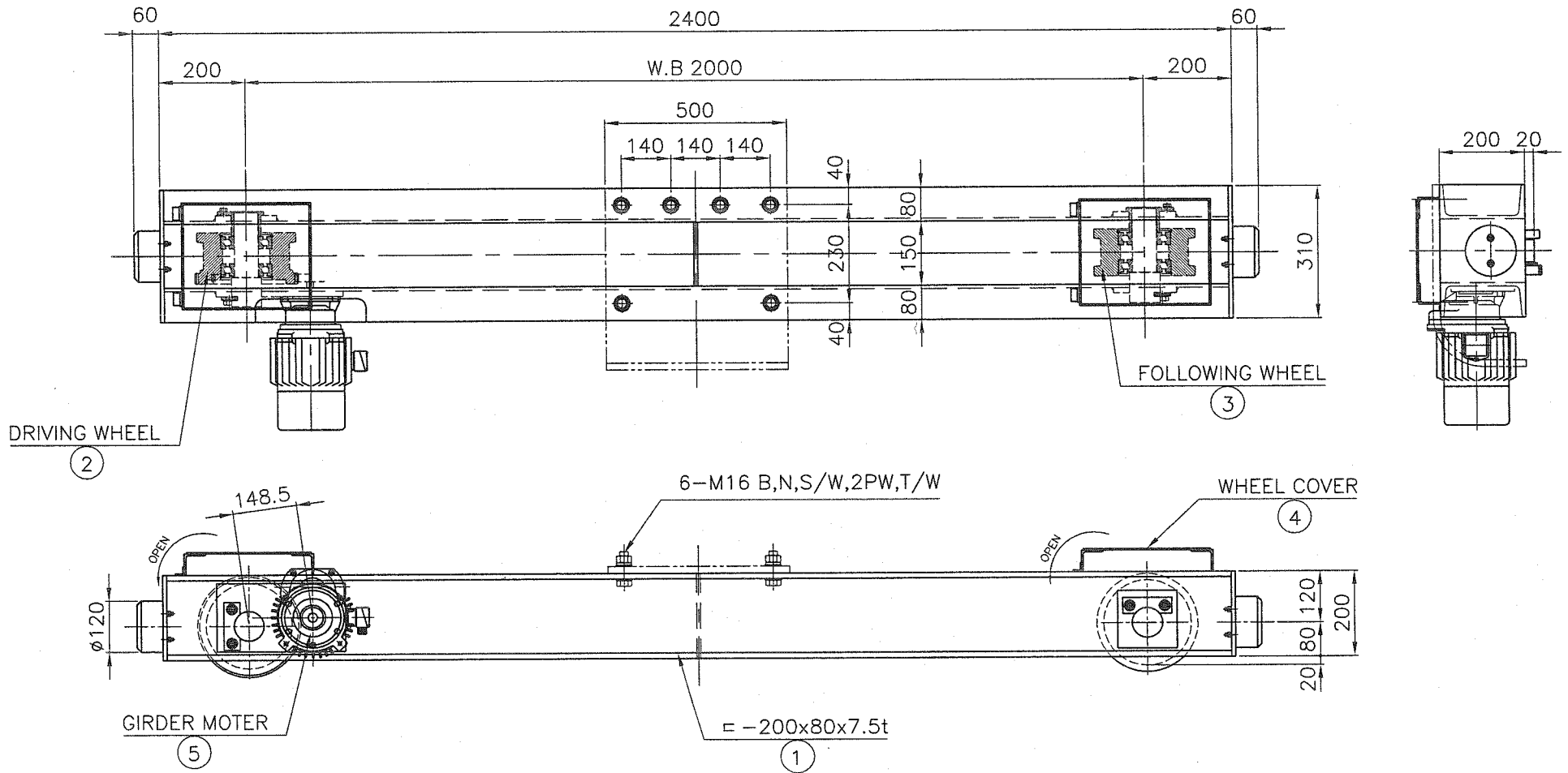
제조사



DRAWN BY: 윤성식
 DESIGNED BY: 김태준
 CHECKED BY: 김창열
 APPROVED BY:

SCALE: N/S
 SUBJECT: CUTTING PLAN
 PROJECT: 5 TON x SPAN 12 M 000

DATE: 2017. 12.
 PROJECT NO.: JD-5-12
 DRAWING NO.: 01B



$$V = 1650 \times 3.14 \times 0.2 \times 16 / 58 \times 1 / 16.3 = 18 \text{ m/min}$$

$$(M = 4)$$

NOTE

1. 지시없는 용접부는 알루미늄재 두께의 70%로 연속용접할것.
2. 절단면은 그라인딩 할것.
3. 거더와 새를을 체결하는 볼트 홀은 동시에 가공할것.
4. 볼트의 길이는 너트를 체결하고 나사산이 3산 이상이 남을것.
5. 거더와 체결하는 볼트는 HIGH TENSION BOLT로 사용할것.
6. 거더와 체결하는 새를의 대각편차는 10M당 1mm, 최대 3mm이내일것.

SPECIFICATION		
SPEED	18	M/MIN
MOTOR	0.75	KW x 4 P
POWER SOURCE	AC ϕ 3 380 V 60 Hz	
REMARK		

WEIGHT = 280 KG

NO.	DESCRIPTION	MT'L	QTY	WEIGHT KG	REMARK
5	GEARED MOTOR	PUR-	1	30	
4	WHEEL COVER	SS400	2	25	
3	FOLLOWING WHEEL	S45C	1	35	
2	DRIVING WHEEL	S45C	1	40	
1	SADDLE FARM	SS400	1	150	

NO.	DATE	REVISION	NO.	DATE	REVISION	NOTE
1			1			
2			2			
3			3			

제조사



DROWN BY: 윤성복
 DESIGNED BY: 김태준
 CHECKED BY: 김한영
 APPROVED BY:

SUBJECT: ϕ 200
 PROJECT: SADDLE ASS'Y

SCALE: N/S
 DATE: 2017. 12.
 PROJECT NO.: JD-5-12
 DRAWING NO.: 01A