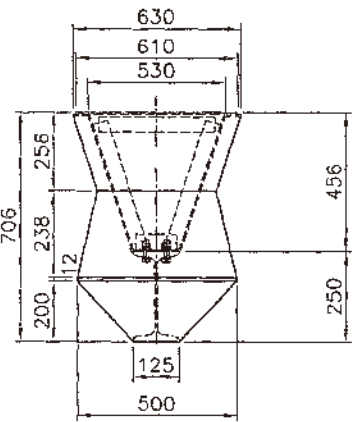
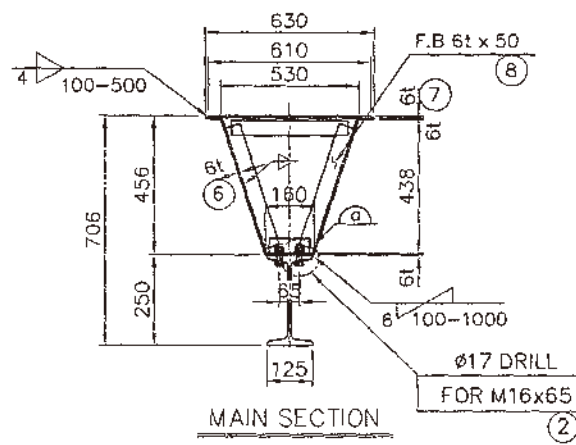


DETAIL (10)



VIEW "B"



MAIN SECTION

TOTAL WEIGHT : 2340 KG

NO.	DESCRIPTION	M'TL	QTY	WEIGHT KG	REMARK
12	H.T B/N 2-P/W	F10T	16		M16x65L
11	9tx200x200	SS400	4	11	
10	9tx200x200	SS400	4	11	
9	L-75x6t-2000L	SS400	4	55	
8	F.B 50x6tx6000	SS400	4.2	61	
7	6tx610x17204	SS400	1	494	
6	6tx1219x17138	SS400	1	984	
5	I-250x125x7.5/12.5t	SS400	1	656	17138L
4	12tx500x610	SS400	2	57	
3	6tx238x500	SS400	2	11	
2	H.T B/N 8T/W 2-P/W	F10T	38		M16x65L
1	H.T B/N 5T/W 2-P/W	F10T	12		M16x65L
NO.	DESCRIPTION	M'TL	QTY	WEIGHT KG	REMARK

NO.	DATE	REVISION	NO.	DATE	REVISION	NOTE
1			1			
2			2			
3			3			

제각사

JIN DO MACHINERY CO.

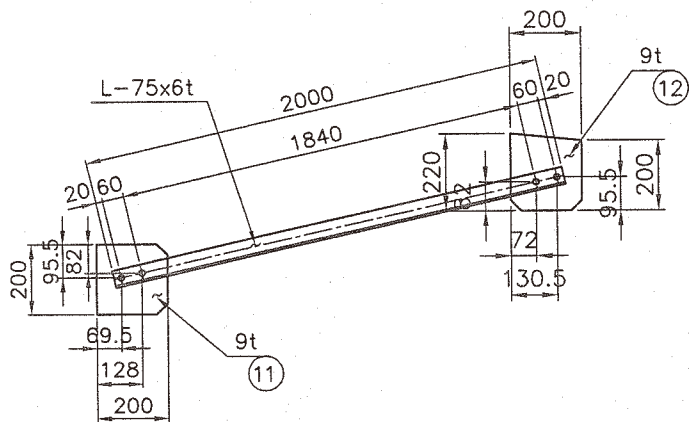
DRAWN BY 김재원  
DESIGNED BY 김재원  
CHECKED BY 김재원  
APPROVED BY 김재원

SUBJECT  
PROJECT

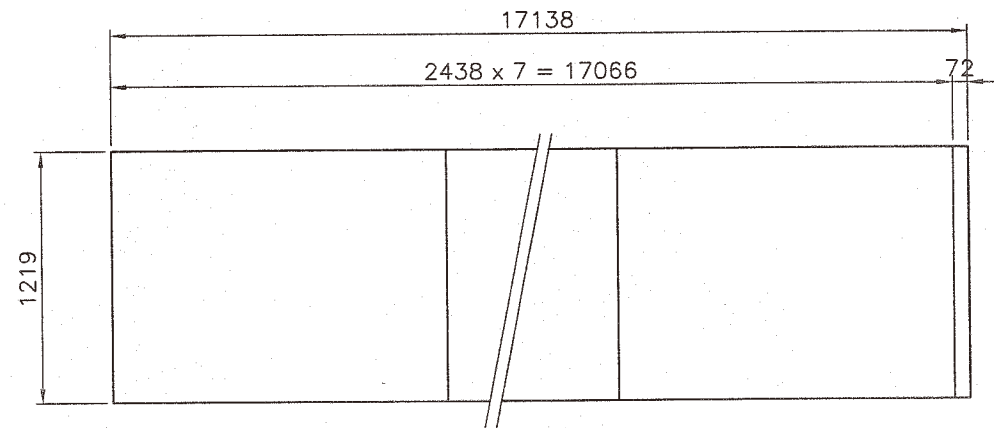
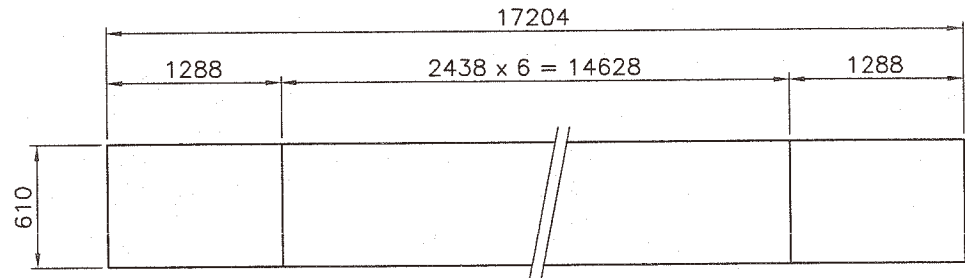
DETAIL OF SINGLE GIRDER  
3 TON x SPAN 17 M 000

SCALE N/5  
DATE 2017. 12.

PROJECT NO. JD-3-17  
DRAWING NO. 01A



⑩ DETAIL



CUTTING PLAN

NO.	DATE	REVISION	NO.	DATE	REVISION	NOTE
1			1			
2			2			
3			3			

제작사

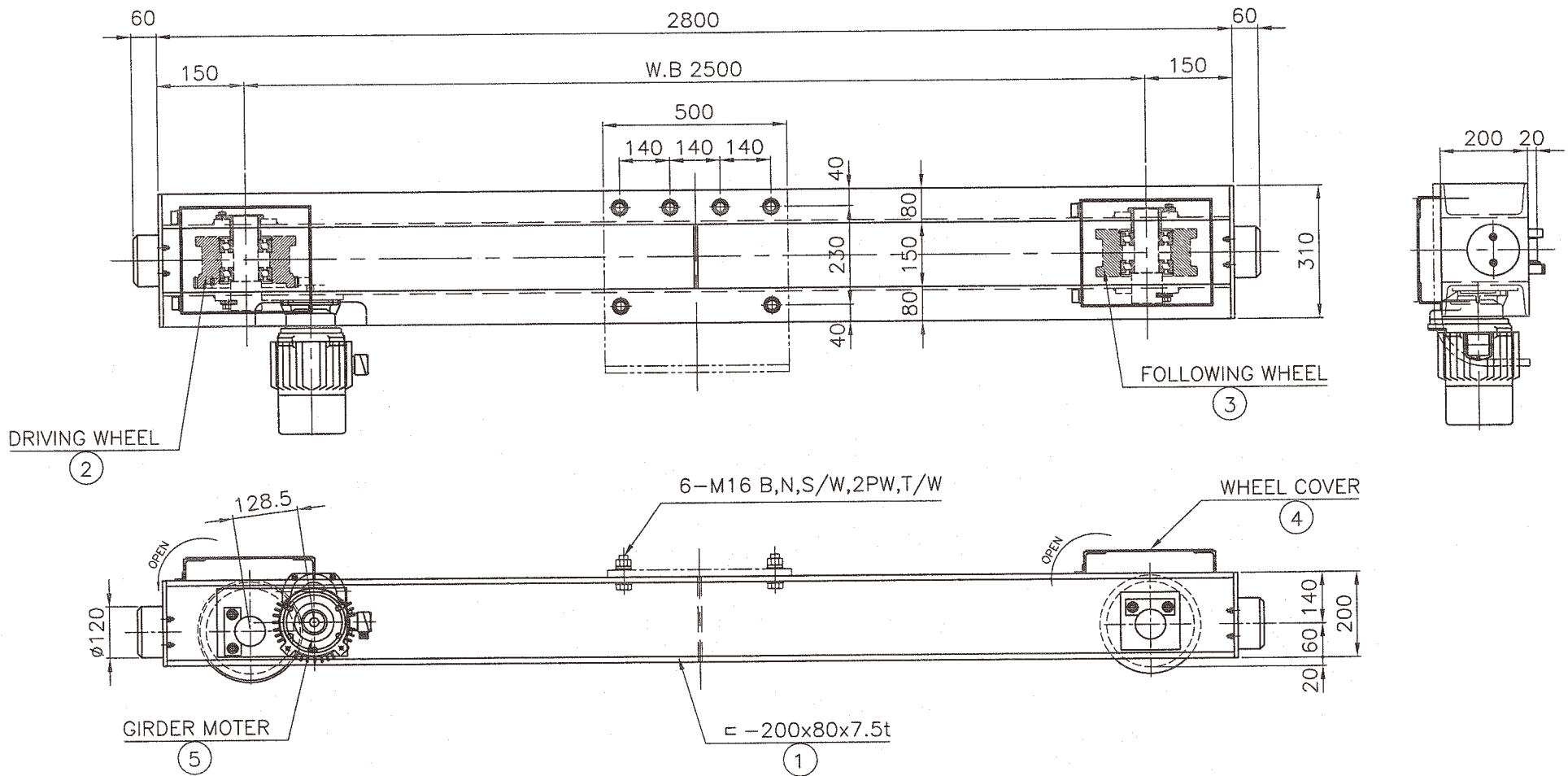


DROWN BY: 윤성택  
 DESIGNED BY: 김희준  
 CHECKED BY: 김환일  
 APPROVED BY:

SCALE: N/S  
 PROJECT: 3 TON x SPAN 17 M 000

CUTTING PLAN  
 3 TON x SPAN 17 M 000

DATE: 2017. 12.  
 PROJECT NO.: JD-3-17  
 DRAWING NO.: 01B



$$V = 1650 \times 3.14 \times 0.16 \times 16 / 48 \times 1 / 16.3 = 17 \text{ m/min}$$

$$(M = 4)$$

SPECIFICATION		
SPEED	17	M/MIN
MOTOR	0.75	KW x 4 P
POWER SOURCE	AC $\phi$ 3 380 V 60 Hz	
REMARK		

WEIGHT = 280 KG

NO.	DESCRIPTION	MT'L	QTY	WEIGHT KG	REMARK
5	GEARED MOTOR	PUR-	1	30	
4	WHEEL COVER	SS400	2	25	
3	FOLLOWING WHEEL	S45C	1	22	
2	DRIVING WHEEL	S45C	1	26	
1	SADDLE FARM	SS400	1	177	

- NOTE**
1. 지시없는 용접부는 양용모재 두께의 70%로 연속용접할것.
  2. 절단면은 그라인딩 할것.
  3. 거더와 새들을 체결하는 볼트 홀은 동시에 가공할것.
  4. 볼트의 길이는 너트를 체결하고 나사산이 3산 이상이 남을것.
  5. 거더와 체결하는 볼트는 HIGH TENSION BOLT로 사용할것.
  6. 거더와 체결하는 새들의 대각편차는 10M당 1mm, 최대 3mm이내일것.

NO.	DATE	REVISION	NO.	DATE	REVISION	NOTE
1			1			
2			2			
3			3			

제작사



DROWN BY: 윤성혁 / rsk  
 DESIGNED BY: 김태준 / kch  
 CHECKED BY: 김항범 / zhw  
 APPROVED BY:

SUBJECT:  $\phi$  160  
 PROJECT: SADDLE ASS'Y

SCALE: N/S  
 DATE: 2017. 12.  
 PROJECT NO.: JD-3-17  
 DRAWING NO.: 01A