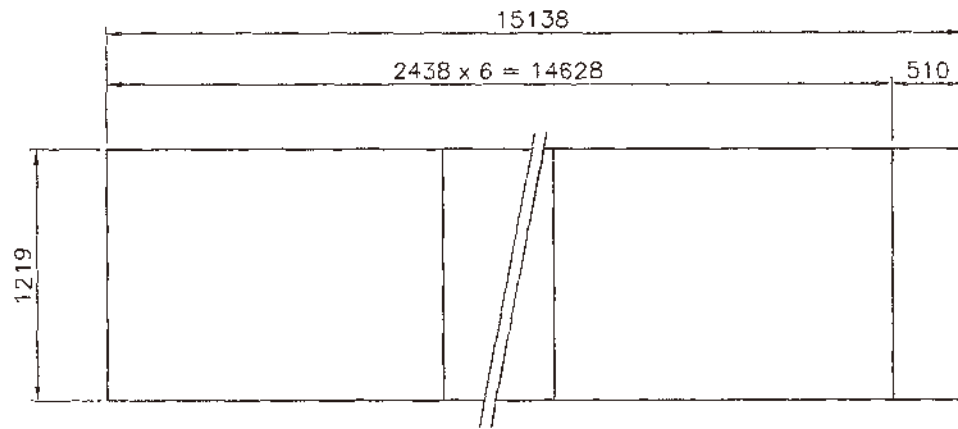
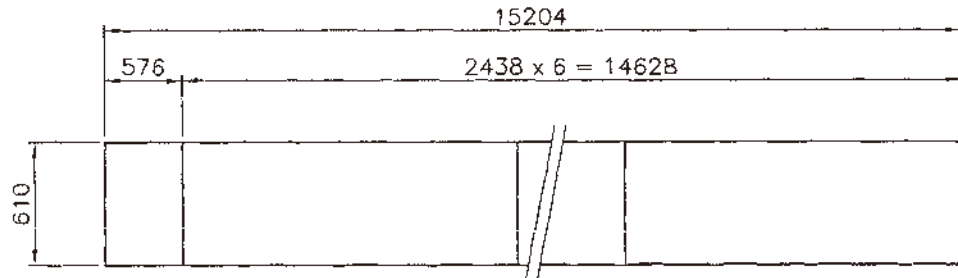


(10) DETAIL



CUTTING PLAN

NO.	DATE	REVISION	NO.	DATE	REVISION	NOTE
1			1			
2			2			
3			3			

제조사



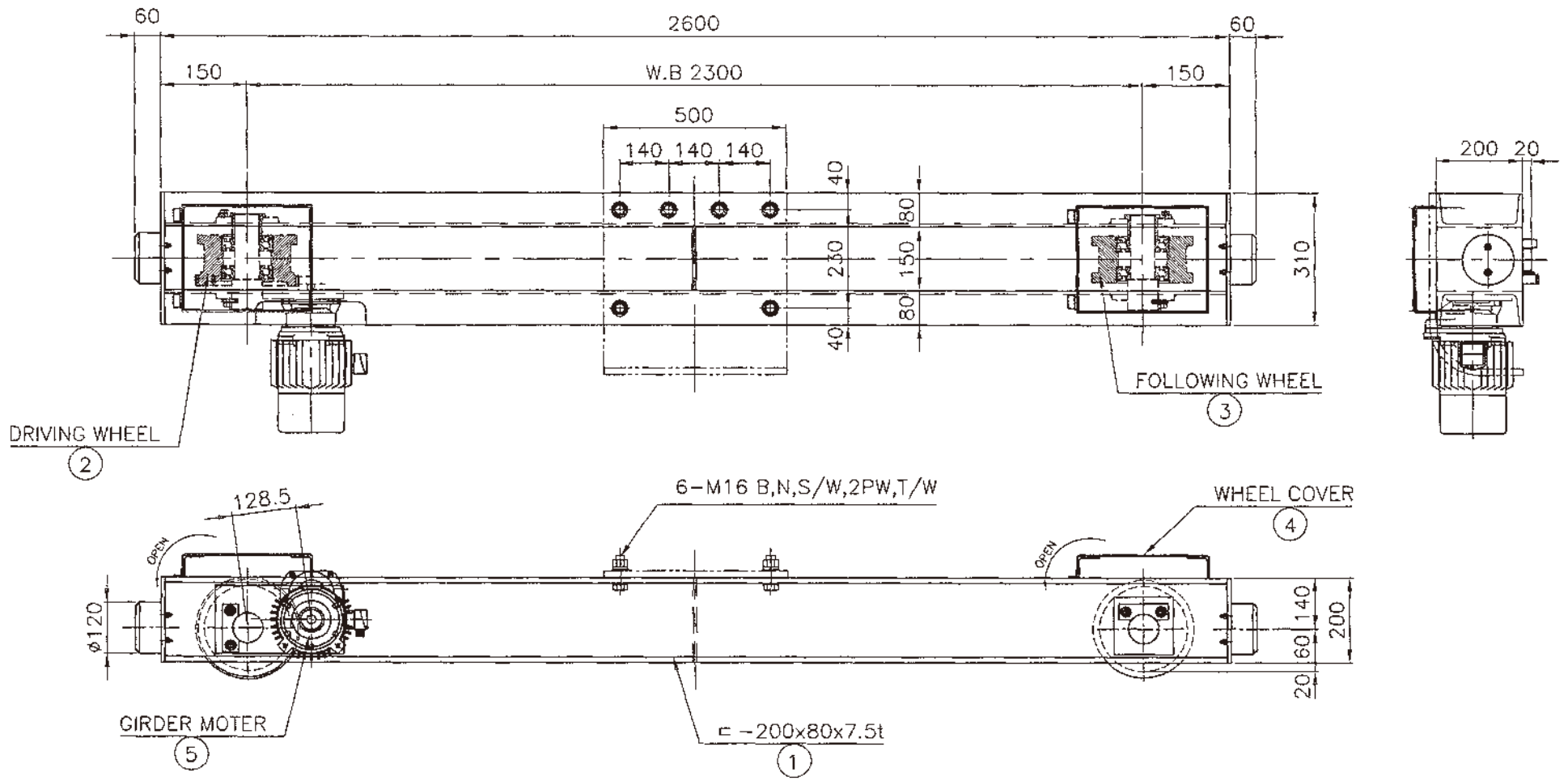
DRAWN BY: 윤성희
 DESIGNED BY: 김희준
 CHECKED BY: 김현영
 APPROVED BY:

SCALE: N/5
 DATE: 2017. 12.

SUBJECT: CUTTING PLAN

PROJECT: 2 TON x SPAN 15 M 000

PROJECT NO.	DRAWING NO.
JD-2-15	01B



$$V = 1650 \times 3.14 \times 0.16 \times 16 / 48 \times 1 / 16.3 = 17 \text{ m/min}$$

$$(M = 4)$$

NOTE

1. 지시 없는 용접부는 양용모재 두께의 70%로 연속용접할것.
2. 절단면은 그라인딩 할것.
3. 거더와 새들을 체결하는 볼트 홀은 동시에 가공할것.
4. 볼트의 길이는 너트를 체결하고 나사산이 3산 이상이 남을것.
5. 거더와 체결하는 볼트는 HIGH TENSION BOLT로 사용할것.
6. 거더와 체결하는 새들의 대각편차는 10M당 1mm, 최대 3mm이내일것.

SPECIFICATION		
SPEED	17	M/MIN
MOTOR	0.75	KW x 4 P
POWER SOURCE	AC ϕ 3 380 V 60 Hz	
REMARK		

WEIGHT = 270 KG

NO.	DESCRIPTION	MTL	QTY	WEIGHT KG	REMARK
5	GEARED MOTOR	PUR--	1	30	
4	WHEEL COVER	SS400	2	25	
3	FOLLOWING WHEEL	S45C	1	22	
2	DRIVING WHEEL	S45C	1	26	
1	SADDLE FRAME	SS400	1	167	

NO.	DATE	REVISION	NO.	DATE	REVISION	NOTE
1			1			
2			2			
3			3			

제작사



DRAWN BY 윤원석
 DESIGNED BY 김대훈
 CHECKED BY 김한영
 APPROVED BY

SCALE
 PROJECT

ϕ 160
 SADDLE ASS'Y

DATE 2017. 12.
 PROJECT NO. JU-2-15
 DRAWING NO. 01A